

System Requirements



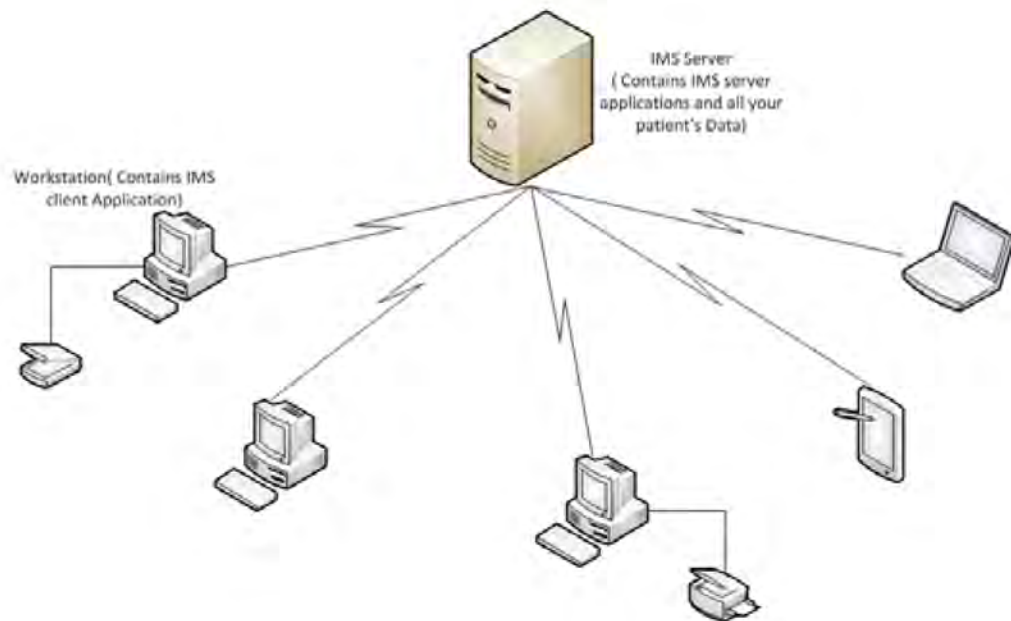
SUITEMED™ IMS

Intelligent Medical Software™

Some product features are only available on certain OS and may require advanced or additional hardware.

How SuiteMed IMS Works

SuiteMed IMS is a Client/Server application. This means that all your patients' data is stored on a single computer designated as the "Server" and is accessed by multiple workstations called "Clients". This design allows for easier management of your software, better performance, less errors and increased scalability. The result is a more reliable system that is able to grow with your office.



Servers

Considering your Database Server

The server is the "command center" for all computers running SuiteMed IMS in your office. Reliability and performance are the two most important aspects when making your decision. Due to your office's dependency on the server, it needs to be capable of running 24 / 7 without problems. This is why it is important to dedicate your server for SuiteMed IMS. Using your server as a workstation is NOT recommended. The information and services SuiteMed IMS manages are invaluable to your practice. You wouldn't want to jeopardize this critical component of your practice with other non-essential applications. You will want to ensure that your data is properly protected from viruses, theft, fire, and power surges. An automatic nightly backup of your patient data is a minimum requirement to ensure reliability. It is also highly recommended that you keep a back-up of your patient data off-site in case of theft, fire or natural disaster. The more precautions you take, the quicker you can get your office up and running in case of a system disaster. Lastly, you want to choose a server that will meet the increase in demands while your office grows. This will ensure that you will not have to purchase a new server for the next 3 - 5 years because of a decrease in performance.

Database Server

	1 to 10 users	11 - 25 users	26 - 50 users	51 - 99 users	100 + users
Processor Type Recommended	Quad-core	Dual-Quad-core	Dual-Quad-core	Dual-Quad-core	Dual-Quad-core
Minimum	Dual Core	Quad core	Quad core	Quad core	Quad core
Memory - Recommended	8 GB	16 GB	32 GB	32-64 GB	64-128 GB
Minimum	2 GB	4 GB	8 GB	16 GB	32 GB
Disk Configuration	Raid 5	Raid 5	Raid 5	Raid 5	Raid 5
Hard Disk Drive	250 GB SCSI 15k RPM (Should have capability of adding more storage if required)	250 GB, SCSI 15k RPM (Should have capability of adding more storage if required)	500 GB, SCSI 15k RPM (Should have capability of adding more storage if required)	1TB, SCSI 15k RPM (Should have capability of adding more storage if required)	1+TB, SCSI 15k RPM (Should have capability of adding more storage if required)
Operating System	Windows® Server 2008, 2003 Recommend Enterprise	Windows® Server 2008, 2003 Enterprise	Windows® Server 2008, 2003, Enterprise	Windows® Server 2008, 2003 Enterprise	Windows® Server 2008, 2003, Enterprise
Backup Solution	Back up on External Hard disk or on CD-R or tape (Online or Offsite backup is recommended)	Back up on External Hard disk or on CD-R or tape (Online or Offsite backup is recommended)	Back up on External Hard disk or on CD-R or tape (Online or Offsite backup is recommended)	Back up on External Hard disk or on CD-R or tape (Online or Offsite backup is recommended)	Back up on External Hard disk or on CD-R or tape (Online or Offsite backup is recommended)
Internet	Broadband Internet connection required for online services	Broadband Internet connection required for online services	Broadband Internet connection required for online services	Broadband Internet connection required for online services	Broadband Internet connection required for online services

What should not be run on the database server?

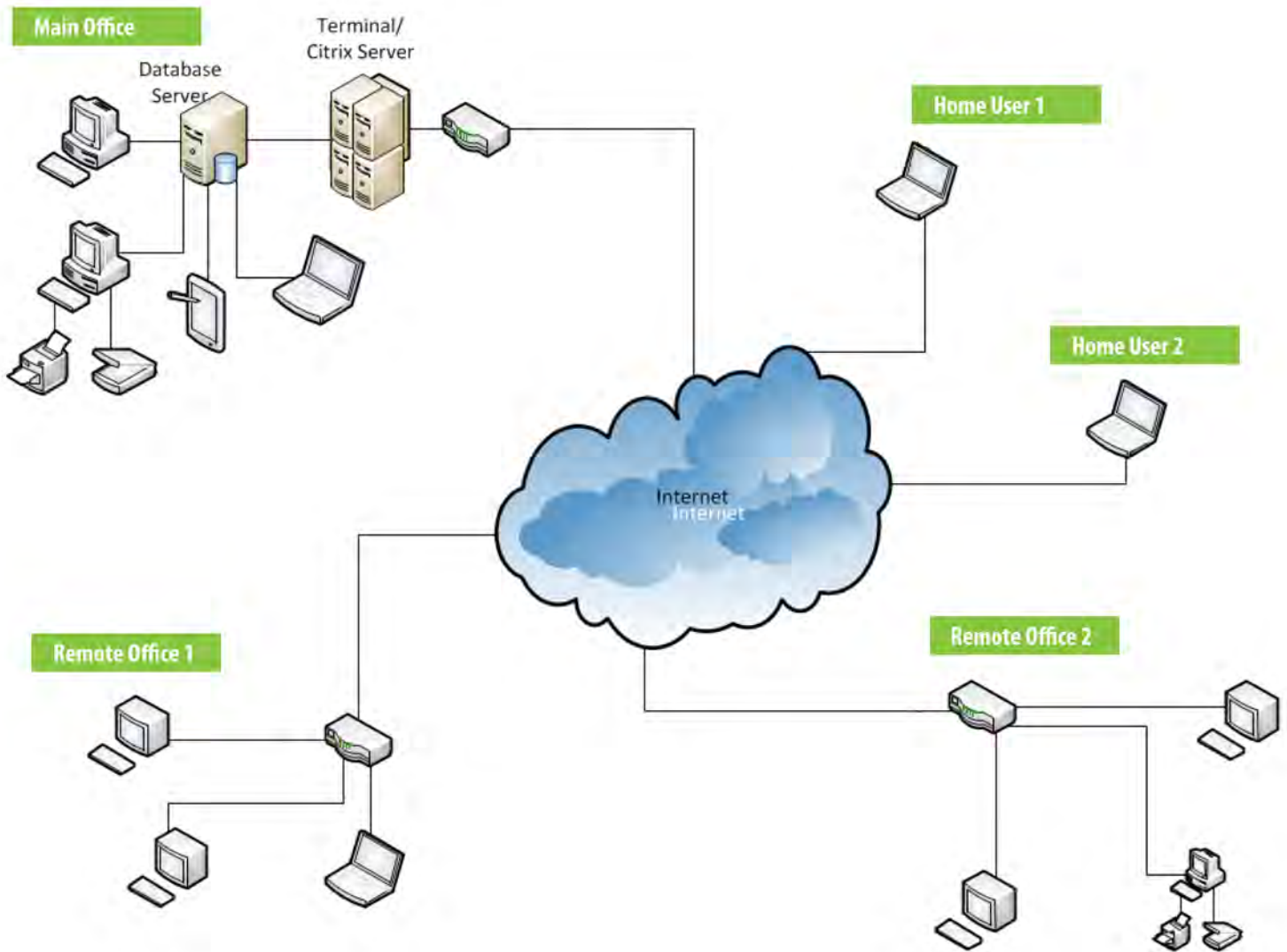
To maintain optimal uptime, there are some common items that should never run on a database server; these include:

- DNS Server - If for any reason the server needs to be stopped for maintenance, domain naming will no longer work
- Domain Controller - For the same reasons as the DNS, except with greater negative enterprise consequences. The database server should not act as a primary or secondary domain controller.
- Router - The database server should not act as a network router.
- File and/or Print Server - The database server should not act as a file and/or print server since these functions can consume CPU and memory resources as well as network bandwidth.
- Terminal Services / Citrix Services - These types of services require a large amount of memory, depending on user load.

What is Terminal Server?

When / Why do you require it?

SuiteMed IMS is a Client / Server application. This means that all your patients' data is stored on a single computer designated as the "Server" and is accessed by multiple workstations called "Clients". This design allows for easier management of your software, better performance, less errors and increased scalability. The result is a more reliable system that is able to grow with your office.





Citrix / Terminal Server

	1 to 10 users	11 - 25 users	26 - 50 users	51 - 99 users
Processor Type Recommended	Quad-core (2.26 or higher- 8 MB L2 cache)	Dual-Quad-core (2.26 or higher)	Dual-Quad-core(2.26 or higher)	Dual-Quad-core(2.26 or higher)
Minimum	Quad-core	Quad-core	Quad-core	Quad-core
Memory - Recommended	8 GB	16 GB	32 GB	64-128 GB
Minimum	4 GB	8 GB	16 GB	32 GB
Disk Configuration	Raid 5	Raid 5	Raid 5	Raid 5
Hard Disk Drive	15k RPM 40 GB(Should have capability of adding more storage if required)	15k RPM 60 GB(Should have capability of adding more storage if required)	15k RPM 120 GB(Should have capability of adding more storage if required)	15k RPM 250 GB(Should have capability of adding more storage if required)
Operating System	Windows® Server 2003 or 2008	Windows® Server 2003 or 2008	Windows® Server 2003 or 2008	Windows® Server 2003 or 2008
Internet	Broadband Internet connection required for online services	Broadband Internet connection required for online services	Broadband Internet connection required for online services	Broadband Internet connection required for online services



Web Server (for Patient Portal)

If you have purchased the Patient Portal module, you will require a dedicated web server to host your website.

	Minimum	Recommended
Processor Type / Speed	Intel® Core™2 Duo 2.33 GHz or higher	Dual-Quad-core (2.26 or higher)
Memory	4 GB	16 GB
Hard Disk Drive	80 GB	80 GB
Operating System	Windows® Server 2003 or Server 2008 (SMB will work fine)	Windows® Server 2003 or Server 2008 (SMB will work fine)
Internet	High Speed Broadband Internet connection required	High Speed Broadband Internet connection required.

Workstations



Desktop or Laptop

	Minimum	Recommended
Processor Type / Speed	Intel® Core™2 Duo 2.0 GHz	Intel® Core™2 Duo 2.33 GHz higher or Intel® Core™ i3/i5/i7
Memory	2 GB	4 GB
Hard Disk Drive	40 GB	80 GB
Operating System	Microsoft® Windows® XP Pro with Service Pack 2 or Windows® Vista® Business or Ultimate , Windows® 7 Professional/Ultimate [We don't support XP Home, XP Media center, Vista® Home, Basic or Premium Editions]	Microsoft® Windows® XP Pro with Service Pack 2 or Windows® Vista® Business or Ultimate , Windows® 7 Professional/Ultimate [We don't support XP Home, XP Media center, Vista® Home, Basic or Premium Editions]
Internet	Broadband Internet connection required for online services	Broadband Internet connection required for online services.



Tablet PC

	Minimum	Recommended
Processor Type / Speed	Intel® Core™ 2 Duo Processor 1.86 GHz	Intel® Core™2 Duo 2.33 GHz higher or Intel® Core™ i3/i5/i7
Memory	2 GB	4 GB
Hard Disk Drive	40 GB	80 GB
Operating System	Windows® XP Tablet Edition 2005 w/SP2	Microsoft® Windows® XP Pro with Service Pack 2 or Windows® Vista® Business or Ultimate , Windows® 7 Professional or Ultimate [We don't support XP Home, XP Media center, Vista® Home, Basic or Premium Editions]

Scanner



Document Scanner

SuiteMed IMS works with all fully TWAIN compliant scanners

Medium-sized organization or single-department application

- ▶ fi-6130 Sheet-Fed Scanner
- ▶ fi-6230 Sheet-Fed Scanner

Scanners (continued)

Larger organizations

- ▶ fi-6140 Sheet-Fed Scanner
- ▶ fi-6240 Sheet-Fed Scanner
- ▶ fi-5530C2 Sheet-Fed Scanner

Note: We do not support any scanner which doesn't have direct and fully twain compliant drivers

Note: We do recommend remote scan for scanning on Terminal / Citrix Servers

Note: Multifunction will work fine for printing but we do not recommend using it for scanning with IMS.



Card Scanner

- ▶ Docket port DS-687 Duplex
- ▶ Docket port PS-467 Simplex

Note: If you are using a Fujitsu scanner which has card scanning ability (like 6130c or 6230c) on the front, you can use it as a card scanner too.



Barcode Scanner

- ▶ Symbol LS Series General Purpose Bar Code Scanner Tested Model: Symbol LS2208

Note: For Shot Autocheckin, the scanning format should be <Prefix><Data><Suffix> where prefix is '^' and suffix is 'Horizontal Tab' For Shot vials, the scanning format should be <Data><Suffix> where suffix is Horizontal Tab

General Purpose Printers

- ▶ Windows compliant laser printer

Special Purpose Printers



Rx Printers

- ▶ Brother laser jet 2170N Network printer (To use with non-padded Rx scripts)
If you would like to print Rx pads



CHDP Printers

- ▶ Windows compliant laser printer
- ▶ OKI MICROLINE® 420 (It can work on multiple driver. Install IBM Pro printer roman 3 drivers. We recommend this for a busy practice.)



Label Printer

- ▶ DymoLabelWriter 400/450
- ▶ DymoLabelWriter 400/450 Turbo



Sig Pad

- ▶ Topaz SignatureGem SE MSR Backlit LCD 4X5
- ▶ Topaz SignatureGem SE MSR Backlit LCD 4X3

No longer supported - ▶ Topaz SignatureGem SE MSR Backlit LCD 4X3 TM-LBK755-BHSB

If you are on terminal server/citrix we recommend a tablet pc instead of using a signature pad



Fax Server

SuiteMed provides Linux based fax servers, which are compatible with SuiteMed Product

Setup instructions:

It will occupy one LAN Port of your network. So it needs to be placed where a fax line jack and a network/LAN jack are available.

Once installed with the LAN port and phone jack, you need to call Meditab to have it configured and once configured, you need to set the physical fax machine to receive faxes after 4 rings.



Web Camera

Creative brand web camera (USB 2 or high)



Auto Check-In Kiosk

Any Touch Screen which can simulate mouse/keyboard input via touch will work fine. Microsoft® Windows® XP Pro with Service Pack 2 or Windows® Vista® Business or Ultimate , Windows® 7 Professional

[We don't support XP Home, XP Media center, Vista® Home, Basic or Premium Editions]

- Tested Models:**
- ▶ PT1710MX 17-inch touch screen monitor
(<http://www.pconnection.com/IPA/Shop/Product/Detail.htm?sku=7824002>)
 - ▶ HP Touch Smart series



Resolution

- ▶ 1024 Pixels Minimum (Horizontal)
- ▶ 768 Pixels Minimum (Vertical)
- ▶ Font Size: Normal
- ▶ DPI Settings: 96dpi



Router / Firewalls

Discretion of local IT technician

For better performance we recommend Gigabyte switches and routers.(10/100/1000)



Wireless

Hardwiring your office to the internet is always the best solution. However, if you seek the convenience of wireless PCs, you do have the option of using them through a Terminal Services connection to a computer that is hardwired to the internet. Setting up a simple remote connection will give you the flexibility of wireless internet with the dependability of a hardwired internet connection. Please ask our team for more details about how to set this up.



Best Practices for Back-Up

You are responsible for backing up your data. If you lose your data, recovery may be difficult and costly. Backing up your data is the best thing you can do to protect your office's data, your patients' data, and to preserve your paperless environment. Your understanding of the back-up process is crucial to a successful back-up. Although SuiteMed customer support initially sets up the scheduled back-up of files onto your local server, they are not responsible for taking that second step. This is your responsibility. We strongly encourage that you hire a network professional to handle your back-up procedures. Have a qualified IT technician contact Customer Support immediately to create a back-up plan. Backing up your data will only take a few minutes of your time, and it's worth the effort. Remember, it is your responsibility to make sure this is done daily.



Information in this document is subject to change without notice.
Copyright © 2008 - 2010 SuiteMed, LLC. All rights reserved.

Intel and Pentium are registered trademarks of Intel Corporation. Microsoft and Windows are registered trademarks of Microsoft Corporation. Other trademarks and trade names may be used in this document to refer to either the entities claiming the marks and names or their products. SuiteMed, LLC disclaims any proprietary interest in trademarks and trade names other than its own.